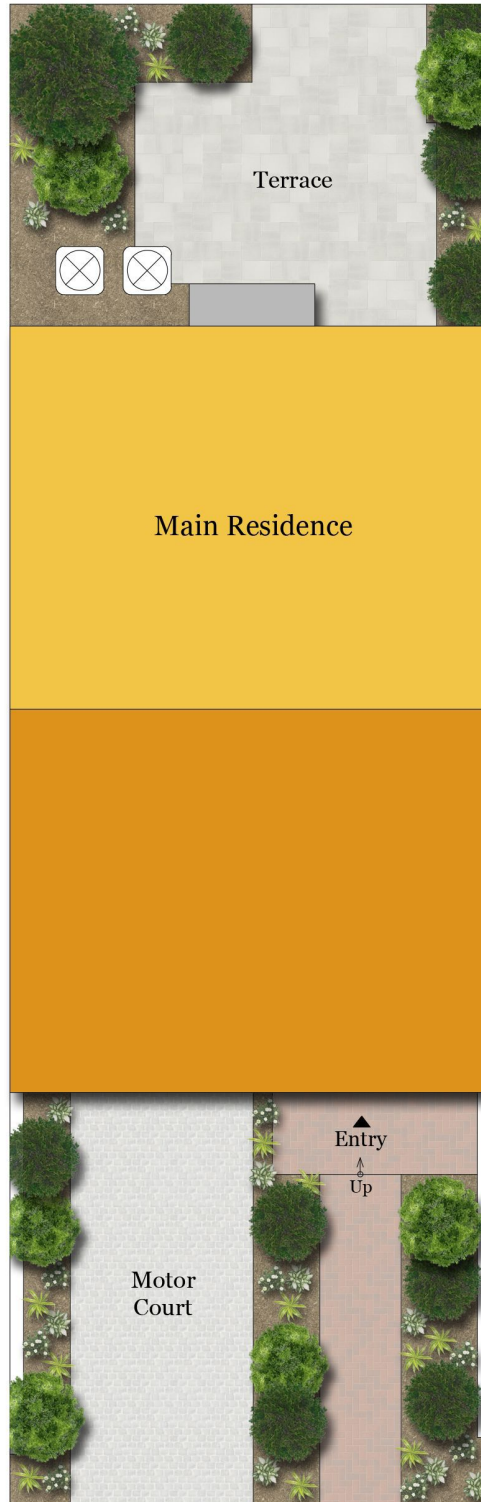


# 3544 WINFIELD LANE ,NW

WASHINGTON, DC 20007



SITE PLAN



Winfield Ln NW

TTR | Sotheby's  
INTERNATIONAL REALTY

Rendering by Floor Plan Visuals.  
All measurements are approximate. While deemed reliable, no information on these floor plans should be relied upon without independent verification.

Presented by Jonathan Taylor, TTR Sotheby's International Realty  
Tel: 202.276.3344  
Email: jtaylor@ttrsir.com

# 3544 WINFIELD LANE ,NW

WASHINGTON, DC 20007



## FIRST FLOOR

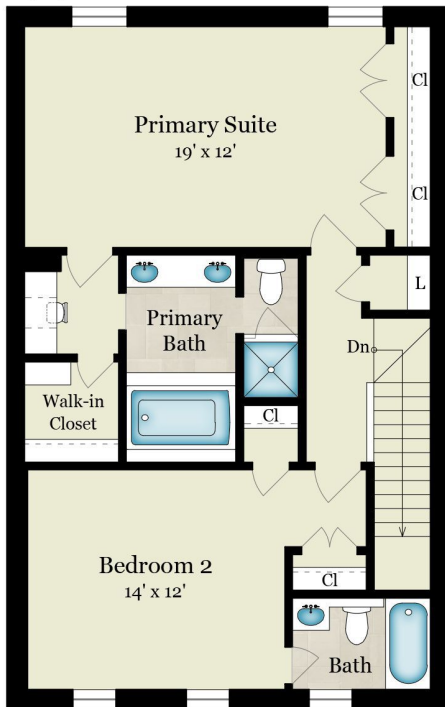
595 SQ FT - Finished  
285 SQ FT - Unfinished

Entry



## SECOND FLOOR

890 SQ FT



## THIRD FLOOR

890 SQ FT



### Estimated Total Finished Square Footage: 2,380 SQ FT

Above-Grade: 2,375 SQ FT Below-Grade: N/A  
Plus 250 SQ FT Garage on First Floor  
Plus 40 SQ FT Mech Room on First Floor  
Calculated per ANSI Standard Z765-2003.

\* Estimated Total Finished & Unfinished Square Footage: 2,670 SQ FT

TTR | Sotheby's  
INTERNATIONAL REALTY

Rendering by Floor Plan Visuals.  
All measurements are approximate. While deemed reliable, no information on these floor plans should be relied upon without independent verification.

Presented by Jonathan Taylor, TTR Sotheby's International Realty  
Tel: 202.276.3344  
Email: jtaylor@ttrsir.com